

# POTENTIALLY HARMFUL PLANTS

Latin Name	Common Name	Warning
<b>Category A</b>		
Rhus diversiloba, radicans, rydbergii striata, succedanea, toxicarium, verniciflua and vernix		
<b>Category B</b>		
Aconitum	Monkshood	CAUTION toxic if eaten/harmful via skin
Arum	Cuckoo Pint	CAUTION toxic if eaten/skin and eye irritant
Atropa	Belladonna	CAUTION toxic if eaten
Brugmansia	Angel's Trumpets	CAUTION toxic if eaten
Colchicum	Autumn Crocus	CAUTION toxic if eaten
Convallaria	Lily of the Valley	CAUTION toxic if eaten
Coriaria	Coriaria	CAUTION toxic if eaten
Daphne	Mezeorum	CAUTION toxic if eaten/skin irritant
Datura	Stinkweed	CAUTION toxic if eaten
Diefenbachia	Dumb Cane	CAUTION toxic if eaten/skin and eye irritant
Digitalis	Foxglove	CAUTION toxic if eaten
Euphorbia (except E. pulcherrima)	Spurge	CAUTION skin and eye irritant/toxic if eaten
Gloriosa superba	Flame Lily	CAUTION toxic if eaten
Heracleum	Hogweed	CAUTION severely toxic to skin with sunlight
Hyoscyamus	Henbane	CAUTION toxic if eaten
Laburnocytisus adamii	Laburnum	CAUTION toxic if eaten
Laburnum	Golden Chain	CAUTION toxic if eaten
Lantana	Shrub Verbena	CAUTION toxic if eaten
Mandragora	Mandrake	CAUTION toxic if eaten
Nerium oleander	Oleander	CAUTION toxic if eaten
Oenanthhe crocata, aquatica and phellandrium	Dead Man's Fingers	CAUTION toxic if eaten
Phytolacca	Inkberry	CAUTION toxic if eaten
Primula obconica	Primula	CAUTION may cause skin allergy
Ricinus communis	Castor Oil Plant	CAUTION toxic if eaten
Ruta	Rue	CAUTION severely toxic to skin with sunlight
Scopolia	Scopolia	CAUTION toxic if eaten
Solandra	Chalice Vine	CAUTION toxic if eaten
Solanum dulcamara	Woody Nightshade	CAUTION toxic if eaten
Sophora	Pagoda Tree	CAUTION toxic if eaten
Taxus	Yew	CAUTION toxic if eaten
Thevetia	Yellow Oleander	CAUTION toxic if eaten/skin irritant
Veratrum	Helibore	CAUTION toxic if eaten
Zigadenus	Death Camas	CAUTION toxic if eaten

## Category C

Acalypha	Cat's Tail	Skin and eye irritant/harmful if eaten
Acokanthera	Poison Bush	Harmful if eaten
Actaea section Actaea	Bane Berry	Harmful if eaten/skin irritant
Adenium	Desert Rose	Harmful if eaten
Aesculus	Horse Chestnut	Harmful if eaten
Aglaonema	Chinese Evergreens	Harmful if eaten/skin and eye irritant
Agrostemma githago	Corn Cockle	Harmful if eaten
Allamanda	Golden Trumpet	Harmful if eaten/skin and eye irritant
Alocasia	Giant Elephant's Ear	Harmful if eaten/skin and eye irritant
Aloe	Aloe	Harmful if eaten
Ailstromeria	Ailstromeria	May cause skin allergy
Amaryllis belladonna	Belladonna	Harmful if eaten
Anthurium	Flamingo Flower	Harmful if eaten/skin and eye irritant
Apocynum	Dogbane	Harmful if eaten
Arisaema	Cobra Lily	Harmful if eaten/skin and eye irritant
Asparagus except A. officinalis	Asparagus Fern	May cause skin allergy/fruits harmful if eaten
Brumfelsia	Lady of the Night	Harmful if eaten
Caladium	Angel's Wings	Harmful if eaten/skin and eye irritant
Calla palustris	Water Arum	Harmful if eaten/skin and eye irritant
Capsicum annuum (ornamental cultivars)	Chilli Pepper	Skin and eye irritant/harmful if eaten
Chelidonium majus	Greater Celandine	Harmful if eaten/skin and eye irritant
Chrysanthemum	Chrysanthemum	May cause skin allergy
Colocasia esculenta	Cocoyam	May cause skin allergy
Cupressocyparis leylandii	Leyland Cypress	May cause skin allergy
Delphinium	Larkspur	Harmful if eaten
Dictamnus albus	Burning Bush	Skin irritant with sunlight
Dracunculus	Dragon Arum	Harmful if eaten/skin and eye irritant
Echium	Viper's Bugloss	Skin irritant
Epipremnum	Devil's Ivy	Harmful if eaten/skin and eye irritant
Euonymus	Spindle Tree	Harmful if eaten
Ficus benjamina	Weeping Fig	May cause skin allergy
Ficus carica	Common Fig	Skin irritant with sunlight
Fremontodendron	California Beauty	Skin and eye irritant
Gaitheria section Pernettya	Prickly Heath	Harmful if eaten
Gelsemium	False Jasmine	Harmful if eaten
Hedera	Ivy	Harmful if eaten/may cause skin allergy
Helleborus	Christmas Rose	Harmful if eaten/skin irritant
Hippeastrum	Amaryllis	Harmful if eaten
Homeria	Homeria	Harmful if eaten
Hyacinthoides	Bluebell	Harmful if eaten
Hyacinthus	Common Hyacinth	Harmful if eaten/skin irritant
Hypericum perforatum	St John's Wort	Harmful if eaten
Ipomoea	Morning Glory	Harmful if eaten
Iris	Yellow Iris	Harmful if eaten
Kalmia	Calico Bush	Harmful if eaten
Lagenaria	Bottle Gourd	Harmful if eaten
Ligustrum	Garden Privet	Harmful if eaten
Lobelia (except L. erinus)	Lobelia	Harmful if eaten
Lupinus	Lupin	Harmful if eaten
Lysichiton	Skunk Cabbage	Harmful if eaten/skin and eye irritant
Mirabilis	Marvel of Peru	Harmful if eaten/skin irritant
Monstera deliciosa	Cheese Plant	Harmful if eaten/skin and eye irritant
Narcissus	Daffodil	Harmful if eaten/skin irritant
Nicotiana	Tobacco	Harmful if eaten
Opuntia microdasys	Bunny Ears	Skin irritant
Ornithogalum	Star of Bethlehem	Harmful if eaten

continued overleaf

## Category C continued

Papaver somniferum	Poppy	Harmful if eaten
Passiflora caerulea	Passion Flower	Harmful if eaten
Pedilanthus	Slipper Cactus	Skin and eye irritant/harmful if eaten
Philodendron	Philodendron	Harmful if eaten/skin and eye irritant
Pedophyllum	May Apple	Harmful if eaten
Polygonatum	Solomon's Seal	Harmful if eaten
Prunus laurocerasus and lusitanica	Dinner Plate Aralia	Harmful if eaten/skin eye irritant
Rhamnus	Cherry	Seed kernels harmful if eaten
Rhapidophora	Buckthorn	Harmful if eaten
Robinia pseudoacacia	Shingle Plant	Harmful if eaten/skin and eye irritant
Sambucus (except S nigra)	Acacia	Harmful if eaten
Schefflera	Elder	Harmful if eaten
Scilla	Umbrella Plant	May cause skin allergy
Solanum (cultivated ornamental species except S.tulicamarara)	Scilla	Harmful if eaten
Solanum pseudocapsicum	Solanum	Harmful if eaten
Spartium junceum	Christmas Cherry	Harmful if eaten
Spathiphyllum	Spanish Broom	Harmful if eaten/skin and eye irritant
Symphoricarpos	Peace Lily	Harmful if eaten/skin and eye irritant
Symphonium	Snowberry	Harmful if eaten
Tabernaemontana	Comfrey	Harmful if eaten
Tulipa	Arrowhead Vine	Harmful if eaten/skin and eye irritant
Vitex	Cape Jasmine	Harmful if eaten
Wisteria	Tulip	Harmful if eaten/may cause skin allergy
Xanthosoma	Chaste Tree	Skin irritant
Zantedeschia	Wisteria	Harmful if eaten
	Blue Taro	Harmful if eaten/skin and eye irritant
	Arum Lily	Harmful if eaten/skin and eye irritant

## POTENTIALLY HARMFUL PLANTS

The British public is fortunate to have access to a wealth of plant species. Most of these are harmless. However, there is a risk associated with a small number of plants used in the house and garden.

The Horticultural Trades Association, working with the Poisons Unit at Guy's Hospital and The Royal Botanic Gardens at Kew have reviewed the toxicology of all the major genera sold through Nurseries and Garden Centres in the UK and have recommended labelling those plants which fulfil the following five conditions:

- They have been identified as being a significant hazard
- The toxic parts of the plant are available or produced in the UK
- The medical symptoms of ingestion and/or contact are serious
- Reported cases are widespread (allergies are not included)
- They pose a threat to human health (not pets or livestock)

Plants are labelled in three categories - A, B and C - according to the severity of the hazard. Not all parts of a plant will necessarily be a hazard but particular attention has been given to those which produce toxic foliage and/or berries which may be particularly attractive to children. Most plants labelled under the code are perfectly safe to purchase (excepting those in Category A) as long as the warnings are heeded. However, they should not be placed or planted where small children are likely to have access to brush against or ingest them.

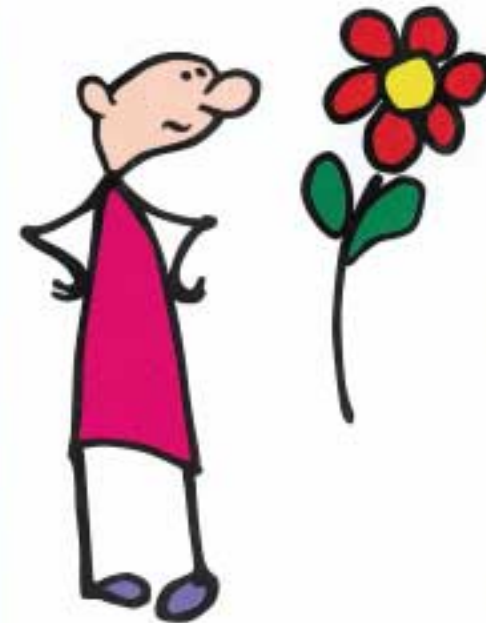
For further information on the code please contact the Information Centre at

**The Horticultural Trades Association**  
19 High Street  
Theale  
Reading RG7 5AH  
Tel: 0118 930 8940

or visit our website at [www.the-hta.co.uk](http://www.the-hta.co.uk)



# harmless?



The retailers code of practice  
for potentially harmful plants